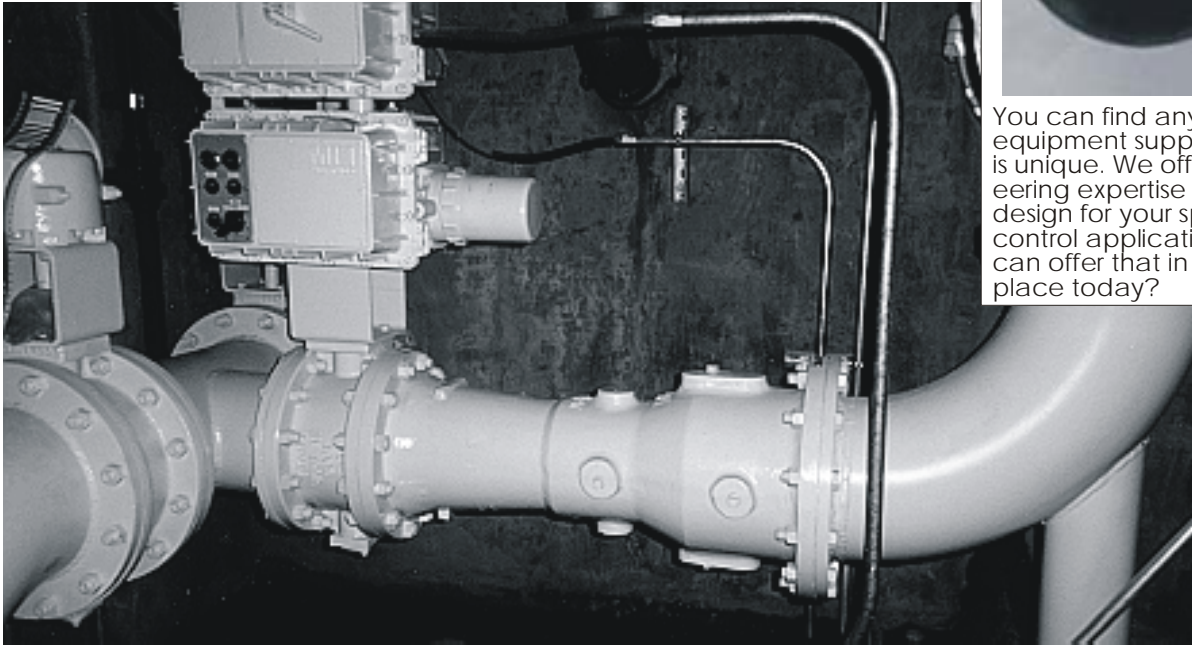


**RATE-OF-FLOW
 CONTROLLERS
 SHOULD NOT COME
 "OFF THE SHELF..."**



You can find any number of equipment suppliers, but PFS is unique. We offer the engineering expertise to properly design for your specific flow control application. Who else can offer that in the marketplace today?



The Only Way to Obtain Optimal Accuracy and Control Performance is to Properly Study the Entire Flow Loop, then Select the Proper Meter-Valve Combination!

Why is the Full PFS Rate-of-Flow Controller Design the Industry Standard?



A single source responsibility PFS will supply the HVT meter, properly designed for the application; the correct valve size with a substantiated K factor; the best operator/actuator solution for your application; the flow transmitter and set point controller.



Our controller is designed to meet YOUR requirements! Others will attempt to force your application to meet their controller's performance.



The complete Rate-of-Flow Controller is assembled and tested prior to shipment to the jobsite. This reduces the risks inherent in different parties assembling, testing and bearing ultimate responsibility for the success of the installation.

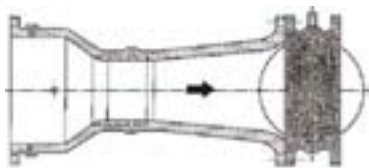


Full 5 year warranty on the complete controller with an additional 20 years on the HVT primary.

PFS HAS AN EXTENSIVE SELECTION OF PRODUCTS WHICH, COUPLED WITH UNSURPASSED ENGINEERING EXPERTISE, WILL ASSURE THAT THE CORRECT RATE-OF-FLOW CONTROLLER IS SELECTED FOR YOUR SPECIFIC AND INDIVIDUAL NEEDS.

Model HVT-FC
HVT FLOW CONTROLLER

THE INDUSTRY STANDARD
 Ideal for Clean Liquid, Gas, and Steam Flow Control Applications.



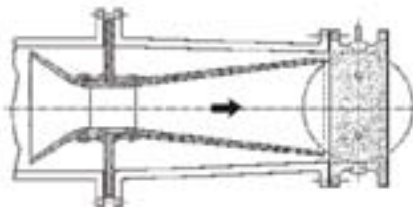
LINE SIZE: 3" diameter and larger.
 BETA RATIO: A = 0.500 approx.
 B = 0.600 approx.
 C = 0.700

BODY: Cast Iron
 THROAT LINER: 304 Stainless Steel, Bronze or other materials.

VALVE SIZE: As required by the application.

Model HVT-IC
HVT INSERT FLOW CONTROLLER

THE INSERT CONTROLLER
 Allows Maximum Flexibility to the Designing Engineer.

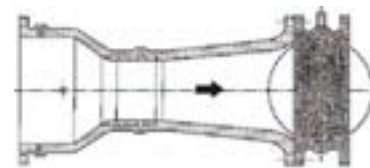


Controller laying length, beta ratio, head loss characteristics and valve sizing can all be tailored to assure optimal performance.

LINE SIZE: Any diameter
 BETA RATIO: Any Beta Ratio as Required
 BODY: Fiberglass or Any as Required
 THROAT LINER: Any as Required
 VALVE SIZE: As required by the application.

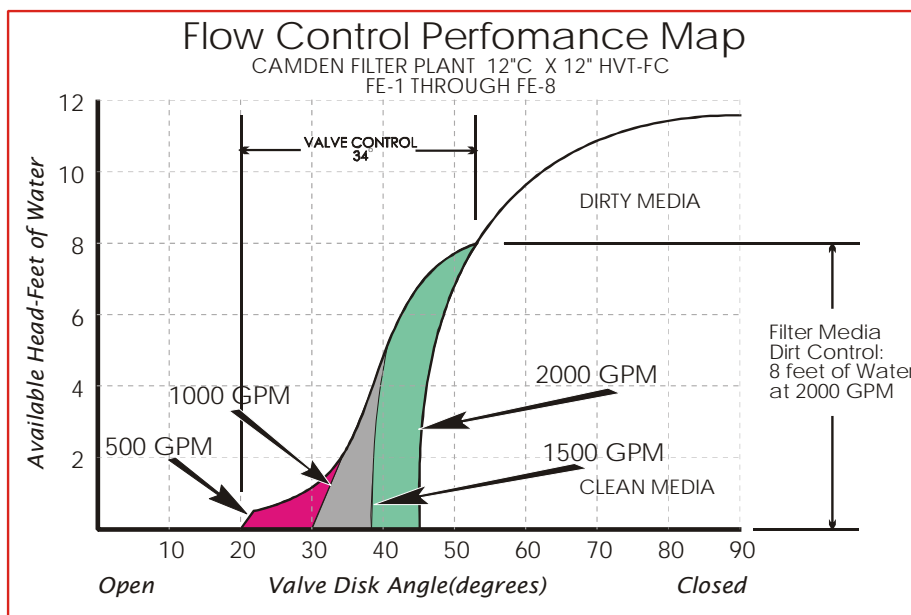
Model HVT-SC
HVT FLOW CONTROLLER w/ SEALED METERING SYSTEM

THE SEALED METERING SYSTEM
 The Most Accurate and Reliable Way to Meter Contaminated Liquid Flow.



LINE SIZE: 6" diameter and larger.
 BETA RATIO: A = 0.500 approx.
 B = 0.600 approx.
 C = 0.700

BODY: Cast Iron
 THROAT LINER: 304 SS, Bronze or Other.
 VALVE SIZE: As required by the application.





MODEL: HVT-FC

HVT- FLOW CONTROLLERS

PRODUCT BULLETIN

DOCUMENT NUMBER: 815

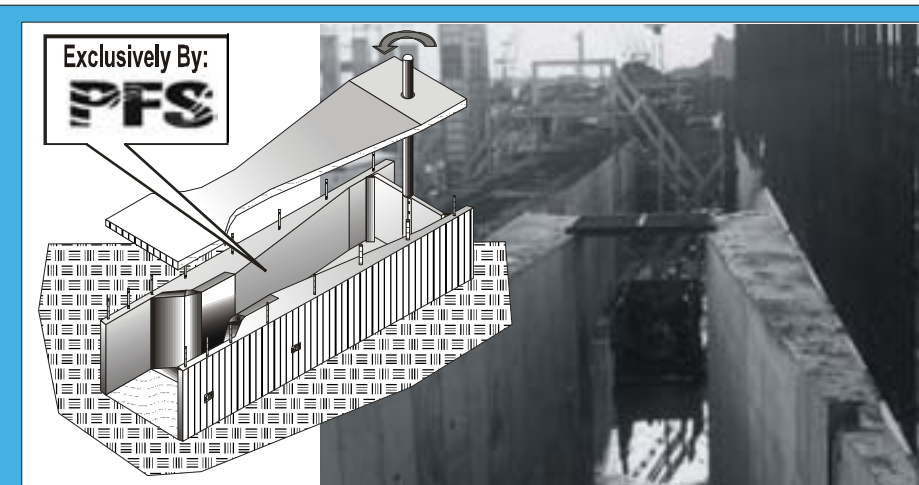
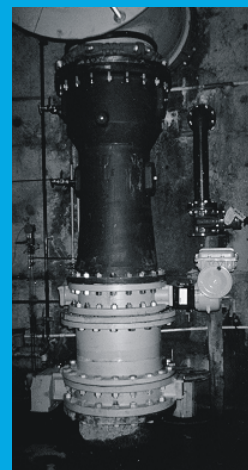
HERE ARE A FEW APPLICATIONS WHICH DEMONSTRATE PFS SKILL!

ALVARADO

Vertically installed with downward flow, these filter effluent controllers are for modulating Rate-of-Flow Control.

The function of this device is to provide maximum effluent rate control without excessive hunting or flow limiting.

Eight new PFS HVT-FCs replaced 1970's vintage non-functioning and limited capacity controllers which had been manufactured by the competition.



RECTANGULAR RATE-OF-FLOW CONTROLLER

One of four influent rectangular rate-of-flow controllers for balancing flow to North System Headworks, Deer Island WPCF. Designed for 1.5 billion gallons per day capacity. All concrete construction with fabricated stainless steel metering surfaces and fabricated epoxy coated carbon steel valve elements.

BUCKEYE WTP REDDING, CA

Backwash Rate-of-Flow Controller with electric modulating valve.

The function of this device is to establish the proper backwash sequence to clean the media without disturbing the media stratification.

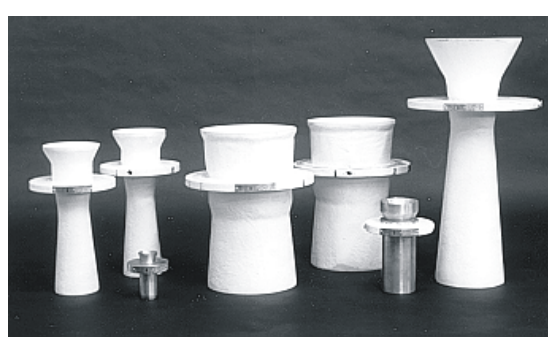


THE LEADER IN RELIABLE FLOW MEASUREMENT

PFS Knowledge --- PFS Meters --- PFS Reliability



HALMI NOZZLE



PLASTIC INSERT



INTEGRAL SPOOL



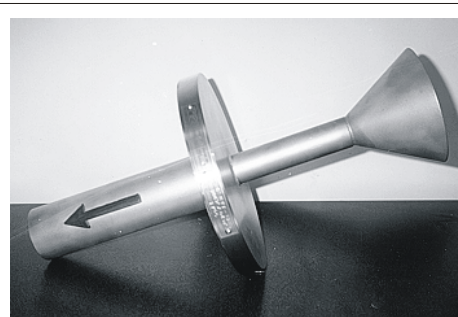
HVT-FC
 FLOW CONTROLLER



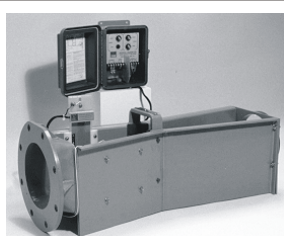
PFS-TS
 TUBULAR
 STRAIGHTENER



HVT-SM
 SEALED METERING
 SYSTEM



HVT-LF
 LOW-FLOW METER



PFS-HF



HVT-CI



FABRICATED 84" HVT



Flow Measurement Products designed for your installation, NOT an off-the-shelf "Quick-Fix!"



Engineering analysis of your existing Flow Measurement System and development of a reliable solution for today and the future.



Prompt and reliable response to your technical questions where others may lack the Penetrating Knowledge.



Total support from design through installation and beyond.

**PFS offers the
 most reliable and
 defensibly accu-
 rate flow measure-
 ment products in
 the world!**